

# SENZAFINE

R&D POLIFORM (1997)



## DESCRIPTION

The innovative walk-in closet created for orderly storage. A way to discover the exceptional variety of looks and functions within the Poliform range.

**Poliform**

# SENZAFINE

R&D POLIFORM (1997)



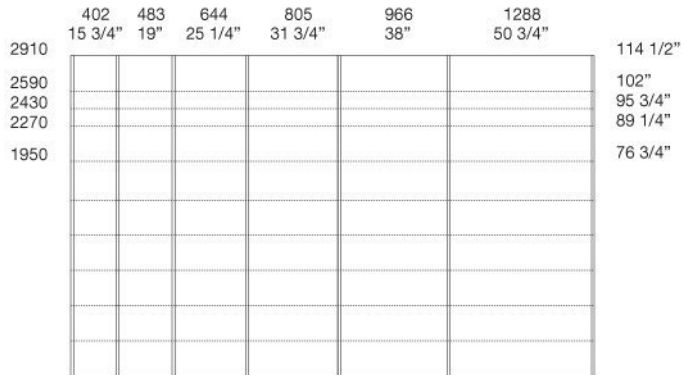
**Poliform**

# SENZAFINE

R&D POLIFORM (1997)

## DIMENSIONS

senzafine wardrobes and walk-in closet

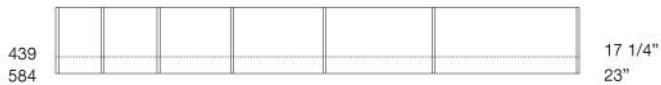


### Size calculation with side thickness 25 - 1"

To obtain the total width, add to the sum of the columns mm 25 - 1" for the lateral side.

### Walk-in closet size calculation with side thickness 35 - 1 1/2"

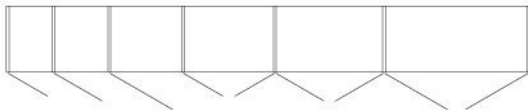
To obtain the total width, add to the sum of the columns mm 35 - 1 1/2" for the lateral side and mm 10 - 1/2" for any other side panel.



## MODULARITY

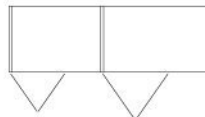
### leaf door

402	483	644	805	966	1288
15 3/4"	19"	25 1/4"	31 3/4"	38"	50 3/4"



### folding door

805	966
31 3/4"	38"



### sliding door

805	966	1288
31 3/4"	38"	50 3/4"



### coplanar door

805	966	1288
31 3/4"	38"	50 3/4"



**Poliform**

# SENZAFINE

FINISHINGS\STRUCTURE\SENZAFINE MELAMINE (5)



MELAMINE  
ARTIK WHITE

MELAMINE  
WHITE  
LARCH

MELAMINE  
CENERE OAK

MELAMINE C.  
WALNUT

MELAMINE  
SPESSART  
OAK

# SENZAFINE

FINISHINGS\EQUIPMENTS\SENZAFINE MELAMINE (5)



MELAMINE  
ARTIK WHITE

MELAMINE  
WHITE  
LARCH

MELAMINE  
CENERE OAK

MELAMINE C.  
WALNUT

MELAMINE  
SPESSART  
OAK

# SENZAFINE

FINISHINGS\SHELVES, TOPS, CHEST OF DRAWERS\TECNO-LEATHER (5)



01 ELEFANTE

02 MORO

03 SENAPE

04 MATTONE

05 LATTE