

HOWARD

JEAN-MARIE MASSAUD (2011)



DESCRIPTION

A simple, refined and timeless style has driven the essential design of this table. A self standing structure in refined wood and steel with a smoked velvet-like grey plate framed by a small setting in wood in order to provide refinement and warmth.

Poliform

HOWARD

JEAN-MARIE MASSAUD (2011)



TECHNICAL DESCRIPTION

TPOLOGY

Table

STRUCTURE

Solid wood

FRAME

laser-cut and folded metal thickness 10 mm painted piombo

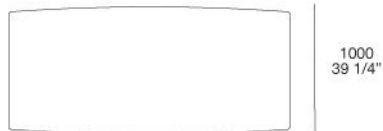
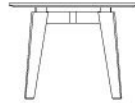
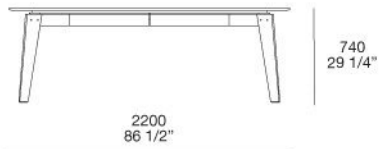
TOP

middle-density fibre panel veneered, , marble or glass

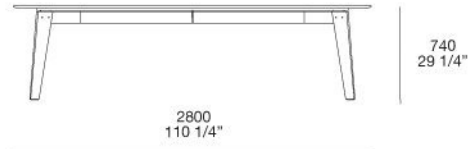
HOWARD

JEAN-MARIE MASSAUD (2011)

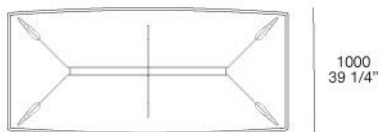
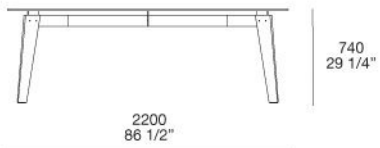
THN220L



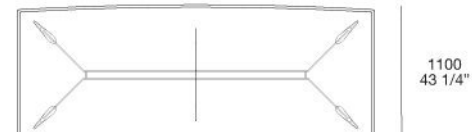
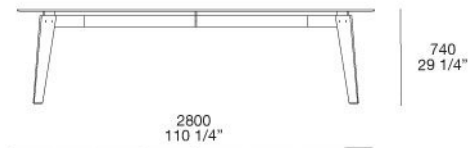
THN280L



THN220

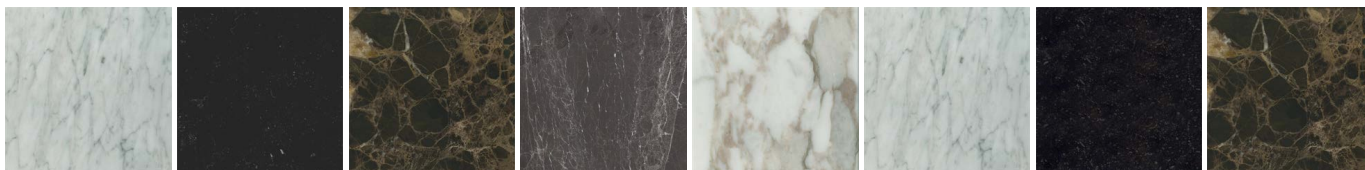


THN280



HOWARD

FINISHINGS\TOP\MARBLE (11)



MATT
BIANCO
CARRARA

MATT PETIT
GRANIT

MATT
EMPERADOR

MATT GREY
STARDUST

MATT
CALACATTA
ORO

GLOSSY
BIANCO
CARRARA

GLOSSY
PETIT
GRANIT

GLOSSY
EMPERADOR



GLOSSY
GREY
STARDUST

GLOSSY
CALACATTA
ORO

GLOSSY
NOIR SAINT
LAURENT

HOWARD

FINISHINGS\TOP\WOODS (3)



SPESSART
OAK

BLACK ELM

CENERO OAK

HOWARD

FINISHINGS\STRUCTURE\WOODS (3)



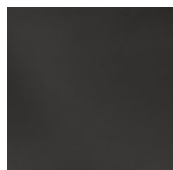
SPESSART
OAK

BLACK ELM

CENERO OAK

HOWARD

FINISHINGS\TOP FRAME\ BROWN NICKEL MAT PAINTED (1)



BROWN
NICKEL MAT
PAINTED