

FEBE

STUDIO KAIROS (2012)



DESCRIPTION

Wood, glass and techno-leather: elegant materials and basic shapes are the distinguishing features of sideboard Febe, design Studio Kairos. Showcase and storage unit at the same time, Febe is a collection of five sideboards for the area of the house dedicated to conviviality.

Poliform

FEBE

STUDIO KAIROS (2012)



TECHNICAL DESCRIPTION

Tipology

Sideboard

Structure

Wooden particles panel veneered

Backrest

Middle-density fibre panel veneered

Doors and front

Wooden particles panel veneered

Drawer structure

wooden particles panel melamine

Base

Aluminium painted

Features

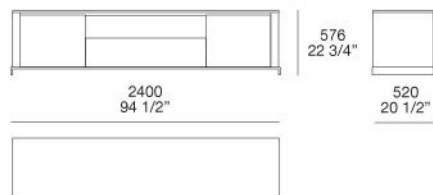
Inner shelves and drawers bottom covered in techno

Poliform

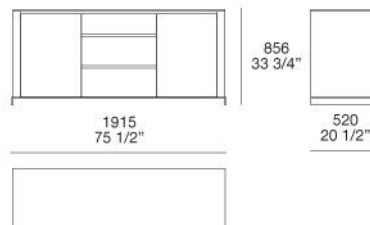
FEBE

STUDIO KAIROS (2012)

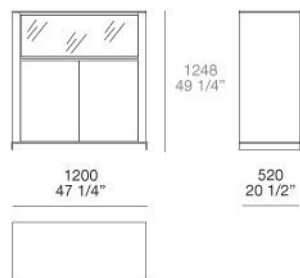
MFE1



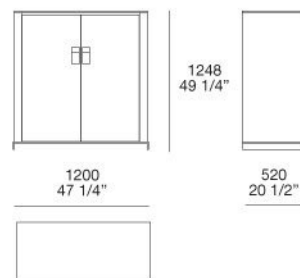
MFE2



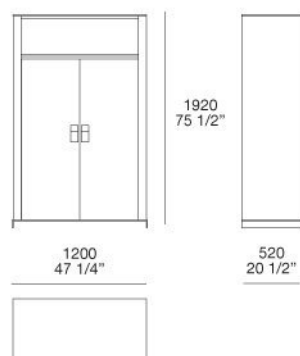
MFE3



MFE4

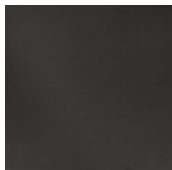


MFE5



FEBE

FINISHINGS\FEET\ BROWN NICKEL MAT PAINTED (1)



BROWN
NICKEL MAT
PAINTED

FEBE

FINISHINGS\FEET\GLOSSY PAINTEDBROWN NICKEL (1)



GLOSSY
PAINTEDBRO
WN NICKEL

FEBE

FINISHINGS\INNER STRUCTURE\SPESSART OAK (1)



SPESSART
OAK

FEBE

FINISHINGS\STRUCTURE\WOODS (3)



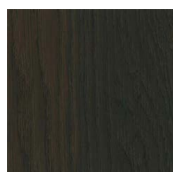
SPESSART
OAK

BLACK ELM

CENERO OAK

FEBE

FINISHINGS\INNER DRAWERS\WOODS (1)



SPESSART
OAK

FEBE

FINISHINGS\TOP\WOODS (3)



SPESSART
OAK

BLACK ELM

CENERO OAK

FEBE

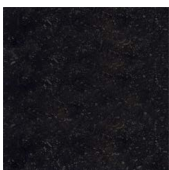
FINISHINGS\TOP\MARBLE (6)



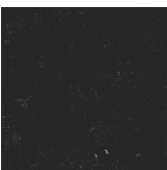
BIANCO
CARRARA
GLOSSY



CALACATTA
GLOSSY



PETIT
GRANIT
GLOSSY



PETIT
GRANIT MAT



BIANCO
CARRARA
MAT



CALACATTA
MAT